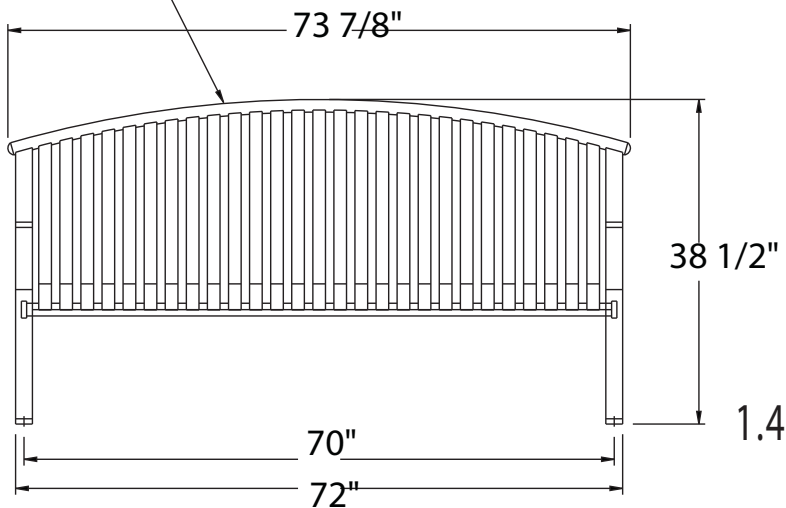


**Model # MF2201**

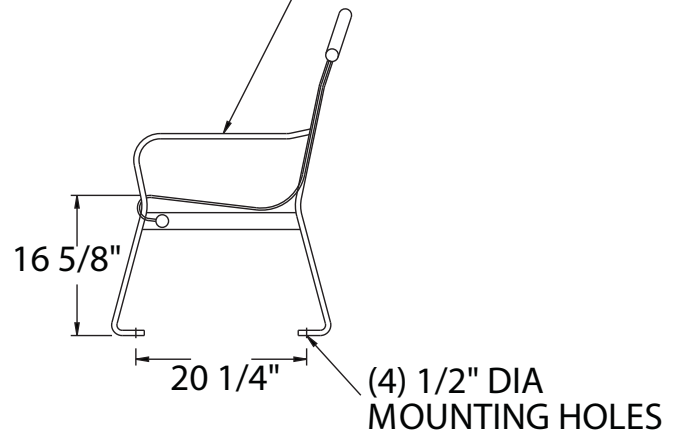
**Dimension Sheet**

**Metal-Armor<sup>SM</sup> Coated Steel Park Bench**

**FORMED BENCH**



**END FRAME**



Environmental  
 VOC Content: 0, 100% solids

Special Approvals  
 FDA approved for direct food contact & has USDA compliance for use within the product zone applications.

Health  
 NFPA Classification:  
 Flammability: 1  
 Health: 0  
 Reactivity: 0

Metal Armor Coating Performance Properties  
 Thermoplastic functional polyethylene copolymer-based coating  
 Coverage: 20mils minimum

Flexibility: 1/8", no cracks  
 Adhesion: >1000 psi/(5A)

Impact Resistance: >384 in/lbs  
 Gloss: At 60 degrees - 35-60  
 Delta Shift: 1.77  
 Hardness: Shore D-48  
 Taber Abrasion: 90 mg loss - CS10 wheel  
 100 mg loss - CS17 wheel

Salt Spray Resistance: >4000 hrs  
 Humidity Resistance: No blistering or loss of Gloss after 1000 hrs

Smoke Development: 10 Flame spread index  
 10 Smoke developed index

Chip Resistance: 8A

**MF2201**

Size: 74" x 28 1/2" x 38 1/2"  
 Weight: 240 lbs.  
 Features: Arched back  
 Seat: 1/4" x 1 1/2" hot rolled steel  
 Arms/Legs: 5/8" x 2" hot rolled steel  
 Anchoring: Optional per request.

ASTM D 533  
 ASTM D 4541/ASTM D 3359  
 Scored and unscored/no peeling or removal  
 ASTM D 2794  
 ASTM D 523  
 1400 MJUV = 5 yrs (color tested: Red)  
 ASTM 2240  
 ASTM D 4060

ASTM B 117  
 ASTM D 2247

ASTM E 84

ASTM D 3170

**ANCHOR DETAIL**

To install Rawl-Bolt™ one piece heavy duty anchors, follow simple instructions below:

1. With fixtures in place, drill hole of same nominal diameter as the Rawl-Bolt.™
2. Remove tag from assembled anchor. Insert anchor through hole in fixture.
3. Tap Rawl-Bolt™ into hole until washer and bolt head are seated against fixture.
4. Tighten with wrench.

