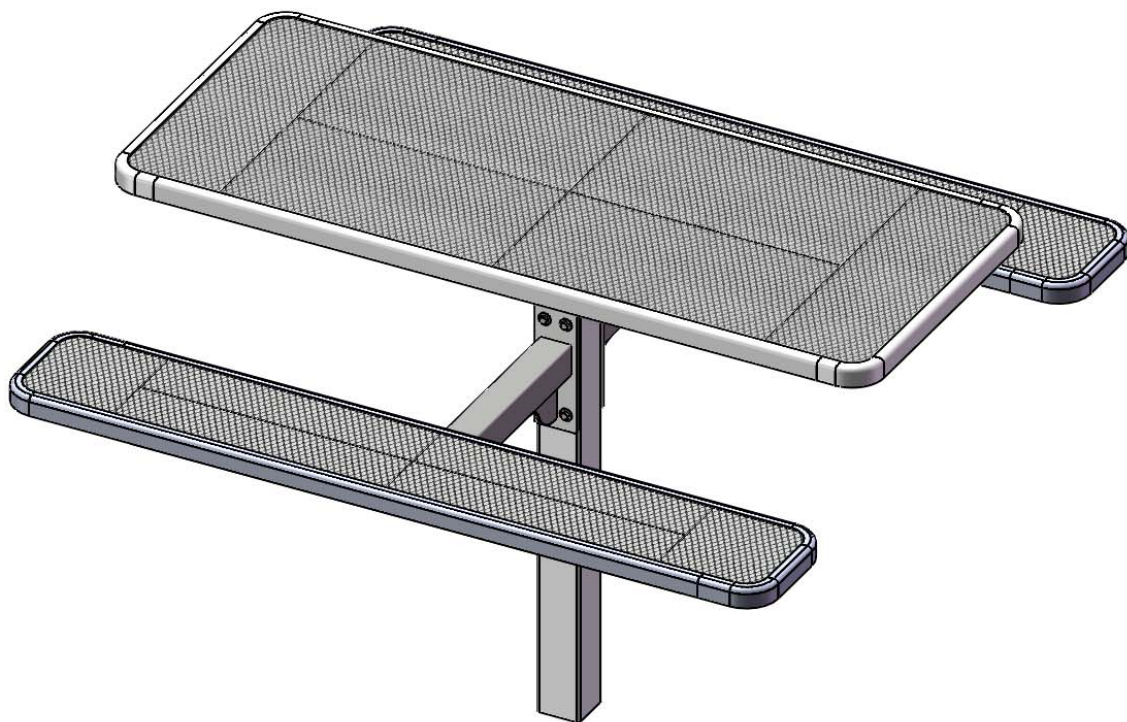


Model # 337S-V6

Instruction Sheet

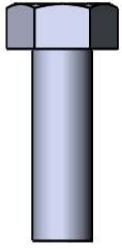
6' Single Pedestal Table, In-ground Mount, Diamond



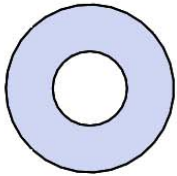
SAFETY WARNINGS & EQUIPMENT INSPECTION

- OWNERS AND INSTALLERS PLEASE NOTE THESE SAFETY WARNINGS AND MAKE USE OF THIS CHECKLIST ON A REGULAR BASIS.
- FOLLOW INSTALLATION INSTRUCTIONS WHEN ERECTING EQUIPMENT.
- GROUND SURFACES AROUND EQUIPMENT SHOULD BE RESTORED AS NEEDED. CONCRETE FOOTINGS SHOULD NEVER BE EXPOSED. SURFACE DEPTH SHOULD COMPLY WITH ASTM AND CPSC SPECIFICATIONS.
- CHECK FOR AND REPAIR DAMAGE CAUSED BY WEAR OR VANDALISM, A MAJOR FACTOR IN INJURY CAUSING SITUATIONS.
- ALL PROTRUDING BOLTS SHOULD BE COVERED OR CUT OFF AND FINISHED SMOOTH. SHARP EDGES ON PIPES SHOULD BE CAPPED OR REMOVED. CHECK FOR BENT, BROKEN, OR SEVERELY WORN PIPE, AND REPLACE.
- ALL EQUIPMENT SHOULD BE FREE OF RUST AND REPAINTED WHENEVER NECESSARY TO DETER RUSTING.
- WE PROVIDE OUR CUSTOMERS WITH LAYOUT SHEETS AND INSTALLATION INSTRUCTIONS. PLEASE KEEP ON FILE THE SPECIFICATIONS SHEET THAT CONTAINS THE LISTING OF EVERY PART USED.
- NEVER ADD COMPONENTS NOT INTENDED FOR USE WITH THIS PRODUCT.
- REGULAR MAINTENANCE IS NECESSARY IN THIS AND ALL PARK AND RECREATIONAL EQUIPMENT TO INSURE THE SAFETY OF THE USER.
- NOTE: PROPER MAINTENANCE OF EQUIPMENT REQUIRES REGULAR TIGHTENING OF ALL BOLTS, NUTS, AND SETSCREWS.
- NOTE: REGULAR CHECKING OF ALL PARTS, CASTINGS, ETC. SHOULD BE MADE. IF A PART IS BROKEN OR WORN, IT SHOULD BE REPLACED IMMEDIATELY.
- CHECK TO BE SURE ALL FITTINGS ARE TIGHT AND THAT BARS AND PIPES DO NOT MOVE.
- REPLACE ALL WORN S-HOOKS. S-HOOKS MUST BE COMPLETELY CLOSED. FAILURE TO CLOSE S-HOOKS CAN RESULT IN SERIOUS INJURY TO THE USER. NEVER REUSE S-HOOKS.
- TEST FOR FREE MOVEMENT OF SWING HANGER AND OTHER MOVING ATTACHED PARTS.
- CHECK FOR WORN CHAINS AND REPLACE THEM.
- A SOFT RESILIENT SURFACE SHOULD BE PLACED UNDER ALL SWINGS EXTENDING AT LEAST TWICE THE HEIGHT OF THE TOP RAIL BOTH FRONT AND BACK.

BEFORE ASSEMBLY, PLEASE MAKE SURE ALL FASTENERS ARE INCLUDED.



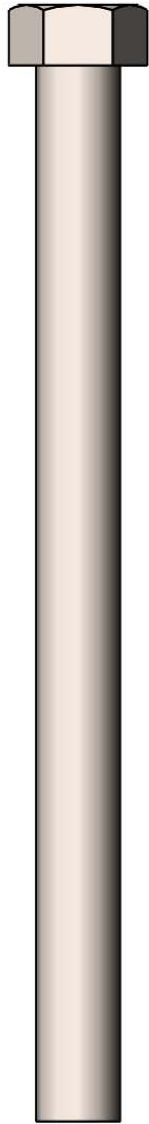
5/16" x 1"
Machine Bolt



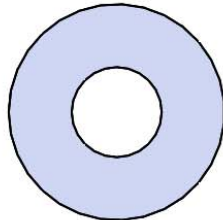
5/16" Washer



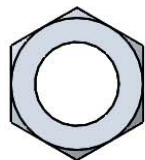
5/16" Kep Nut



7/16" x 5-1/2"
Machine Bolt



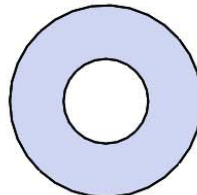
7/16" Washer



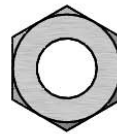
7/16" Hex Nut



3/8" x 4"
Carriage Bolt

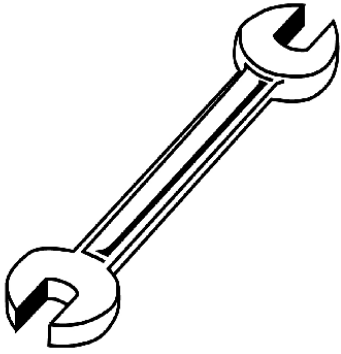


3/8" Washer

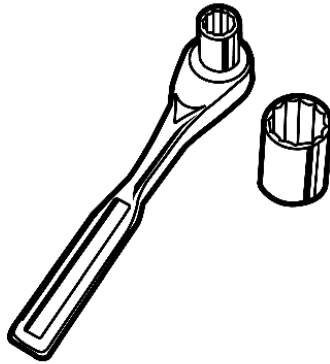


3/8" Hex Nut

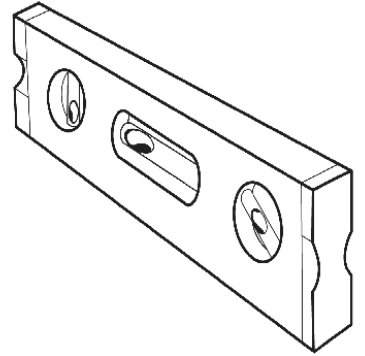
ALSO NEEDED FOR THIS ASSEMBLY WILL BE THE FOLLOWING MATERIALS:



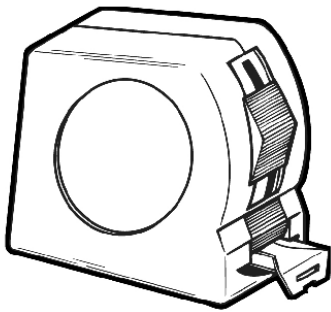
1/2" & 9/16" & 11/16"
Wrench



1/2" & 9/16" & 11/16"
Socket Wrench



Level



Tape Measure

PRODUCT SPECIFICATIONS

337S-V6 RECTANGULAR INGROUND TABLE

Top & Seats: 11 gauge die formed angle frame 1"x1-7/8" with 3" radius corners. 3/4" #9 steel expanded metal. 7 gauge x 1-1/2" flat bar center support and mounting bracket understructure. Electrically MIG welded.

Coating: Oven fused functionalized polyethylene copolymer-based thermoplastic. Fluidized bed coating application with superior mechanical performance, impact resistance and UV-stability.

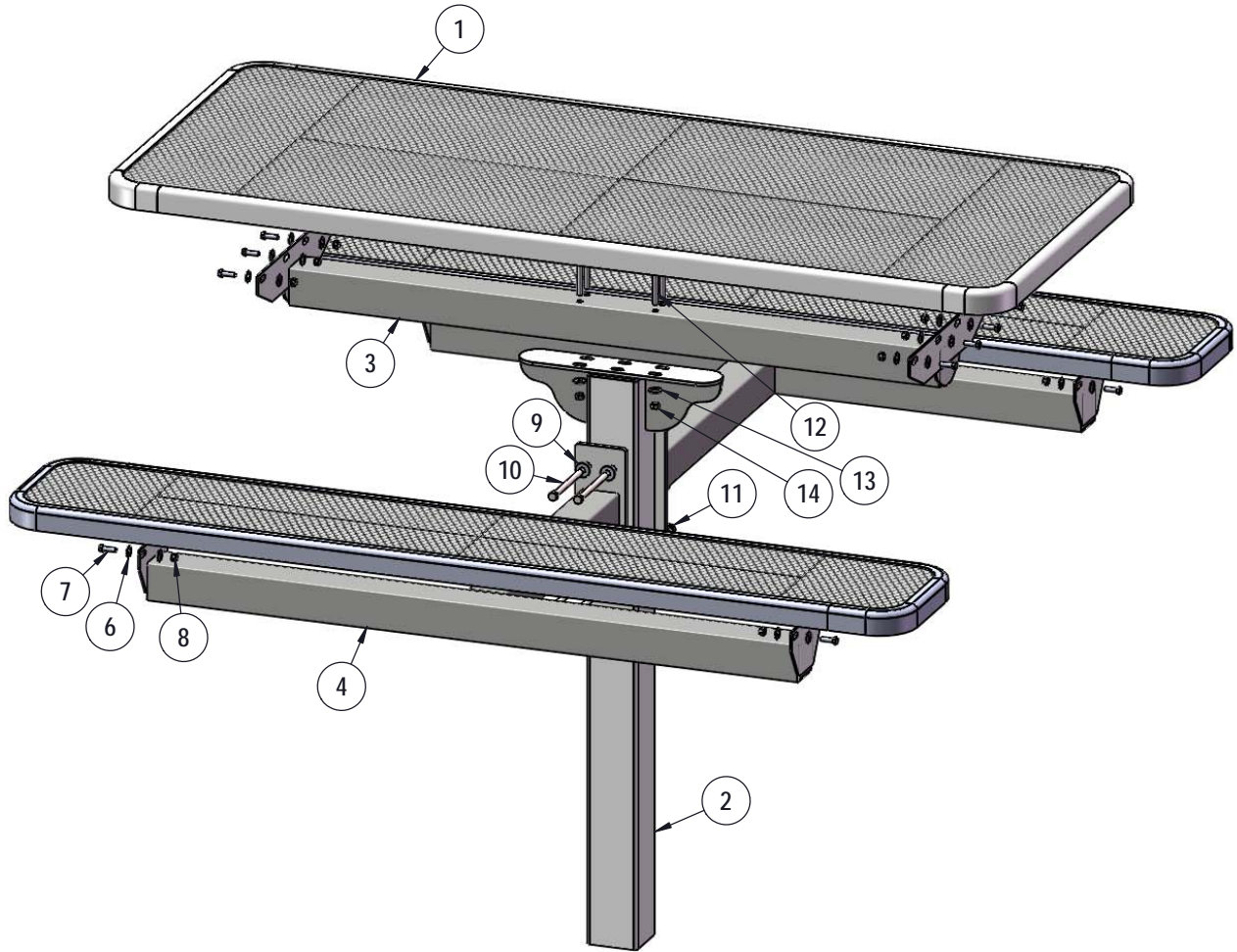
Frame: Main support column is 4"x 4"x 11 gauge pre-galvanized structural steel tubing with a 16" x 16" x 1/2" surface mount plate. Arms are fabricated from 3"x 3"x 11 gauge pre-galvanized structural steel tubing welded to 1/4" precision punched plates for attachment to the main column and 2"x 2"x 3/16" structural steel angle for lateral seat support. Seat attachment points are 10 gauge precision punched tabs. Table top attachment structure is fabricated from 2"x 2"x 3/16" structural steel angle and top attachment points are 7 gauge x 1-1/2" steel flat bar. All electrically MIG welded.

Frame Coating: Electrostatic powder coated application oven cured.

Hardware: All stainless steel hardware fasteners.

Dimensions: Top is 30" wide x 72" long x 30-1/4" high from ground. Seats are 12" wide x 72" long x 18-13/16" high from ground. Overall height is 50-1/4". Outside to outside dimensions of 67-3/4" x 72".

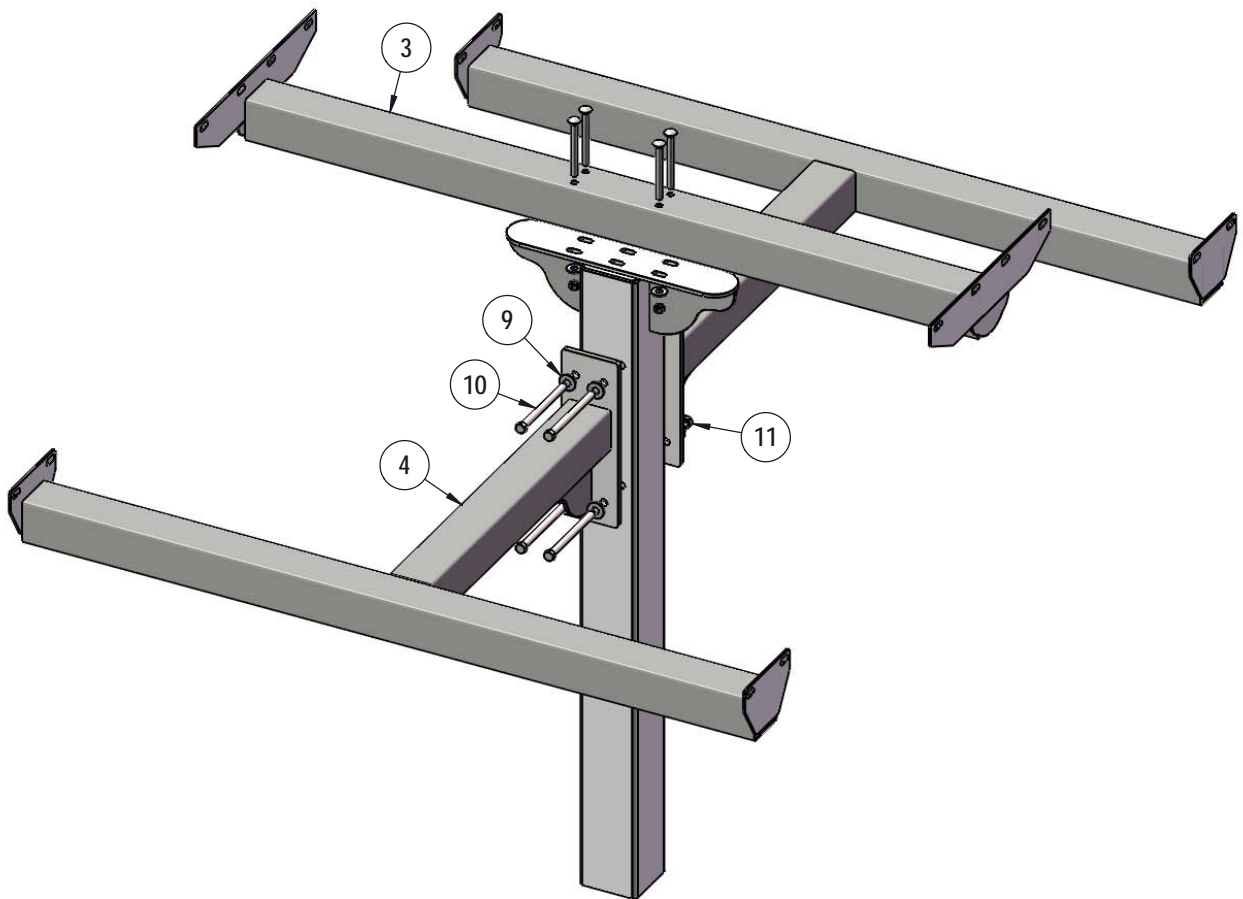
COMPONENTS



| ITEM NO. | PartNo | DESCRIPTION | Qty. |
|----------|-------------|-----------------------------------|------|
| 1 | T-V72-T | 6' Expanded Top | 1 |
| 2 | 337S | Post Assembly | 1 |
| 3 | P-V337-72-T | 6' 337 Top Vinyl Bracket Assembly | 1 |
| 4 | V337-72-S | 337 6' Vinyl Seat Arm Assem | 2 |
| 5 | T-V72-S | 6' Expanded Seat | 2 |
| 6 | 33-02-0007 | 5/16" SS Washer | 32 |
| 7 | 33-05-0029 | 5/16" x 1" Machine Bolt (SS) | 16 |
| 8 | 33-03-0012 | 5/16" Kep Nut (SS) | 16 |
| 9 | 33-02-0004 | 7/16" SS Washer | 9 |
| 10 | 33-06-0050 | 7/16" x 5-1/2" Machine Bolt | 4 |
| 11 | 33-01-0006 | 7/16" Hex Nut (SS) | 4 |
| 12 | 33-06-0067 | 3/8" x 4" Carriage Bolt (Zinc) | 4 |
| 13 | 33-02-0008 | 3/8" Flat Washer (SS) | 4 |
| 14 | 33-01-0018 | 3/8" Hex Nut (SS) | 4 |

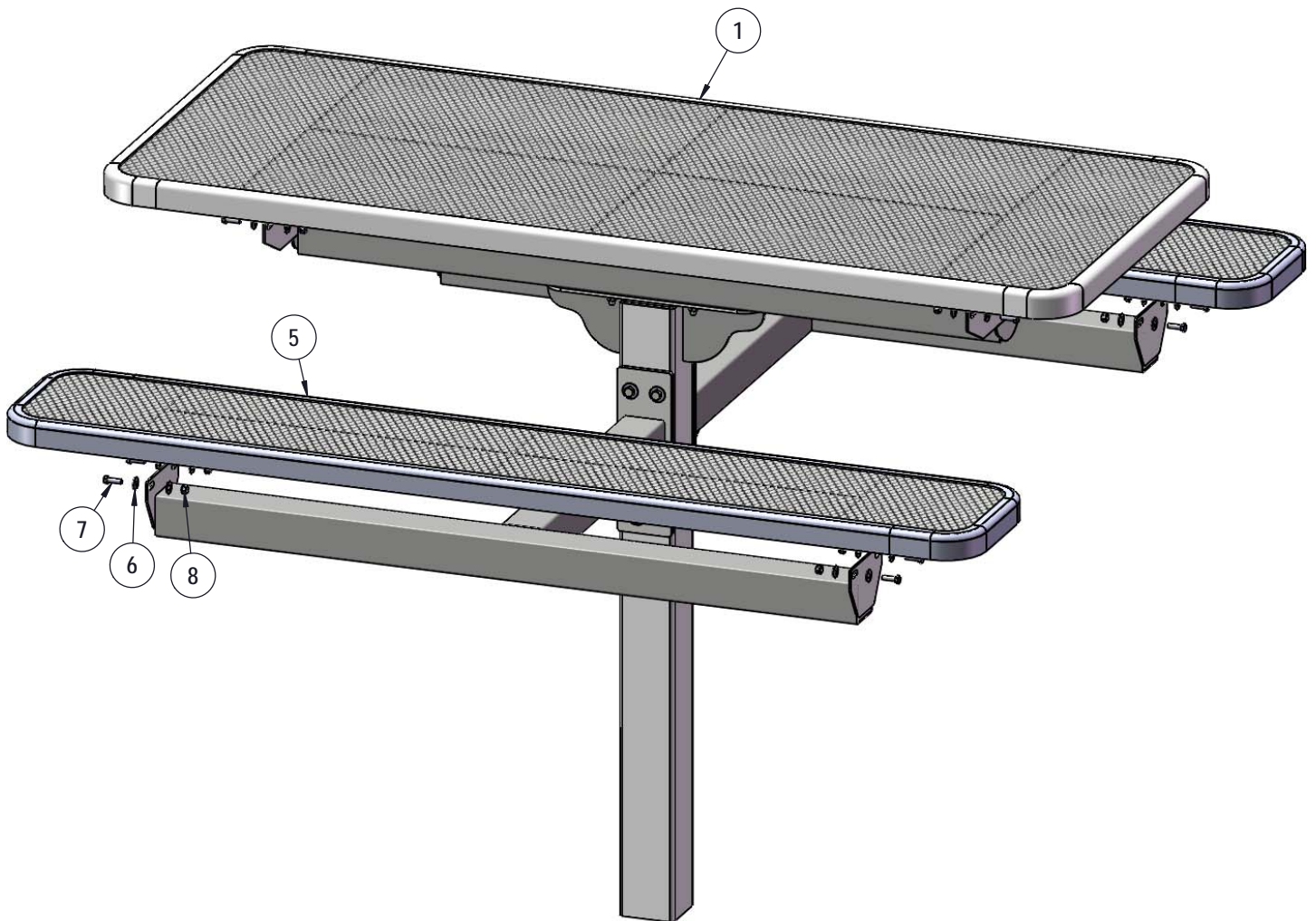
STEP 1

Attach the Bracket Assembly and the Seat Arm Assemblies to the 337 Post as shown using specified hardware.



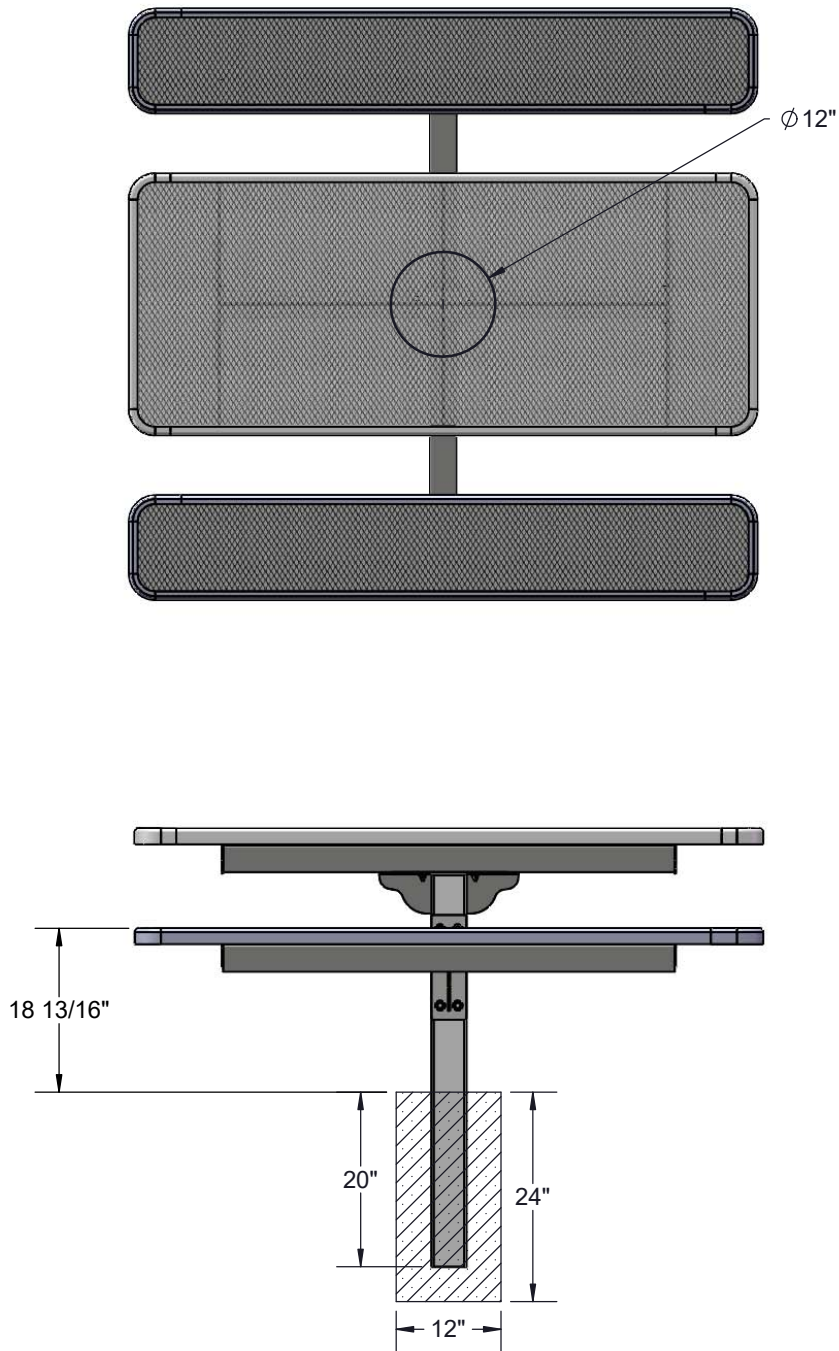
STEP 2

Attach the Seats and Top to the Bracket Assembly and the Seat Arms Assemblies as shown using specified hardware.



FOOTING

Estimated Required Concrete:
5 - 50lb Bags of Concrete Mix



OVERALL DIMENSIONS

