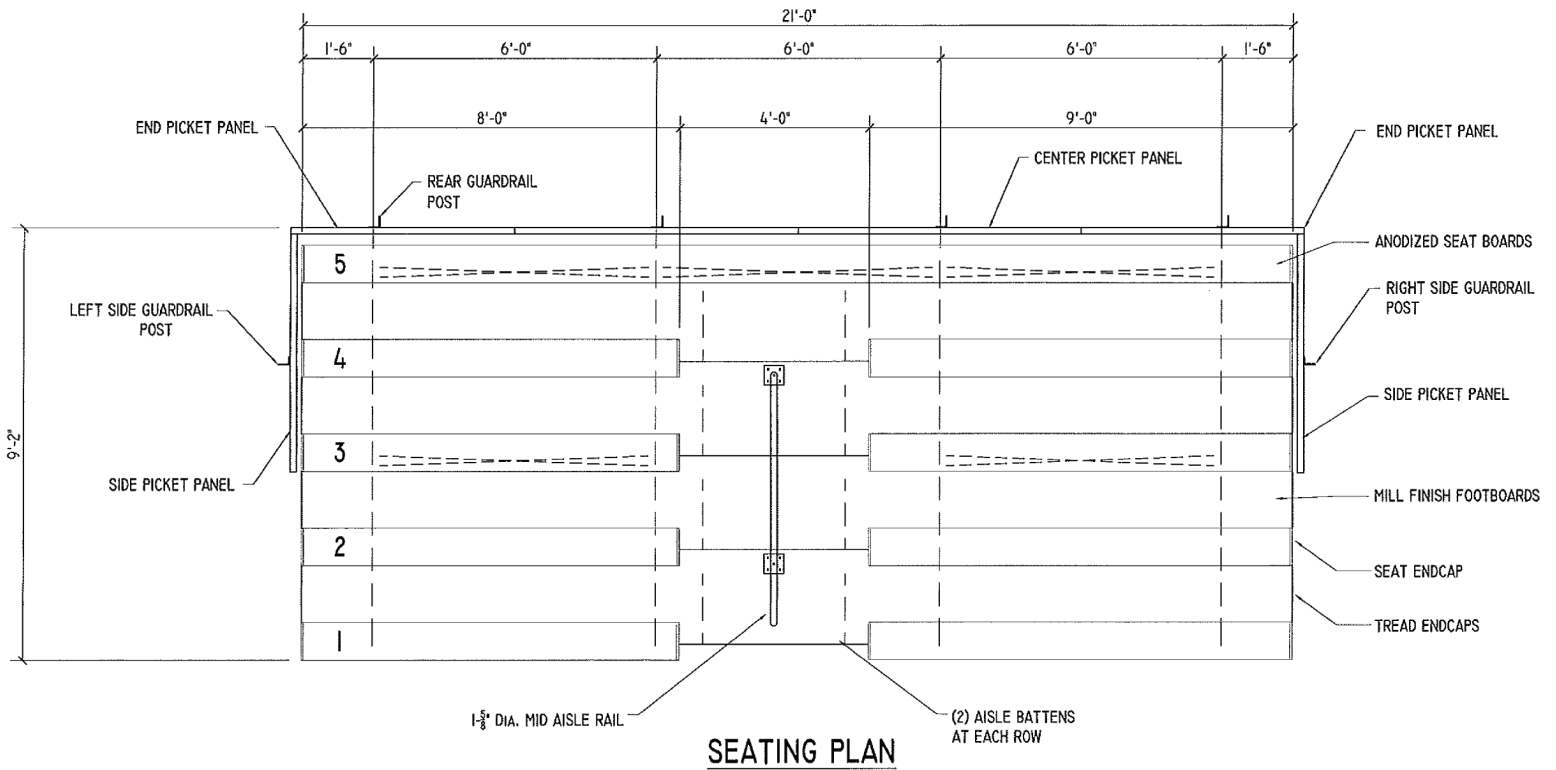
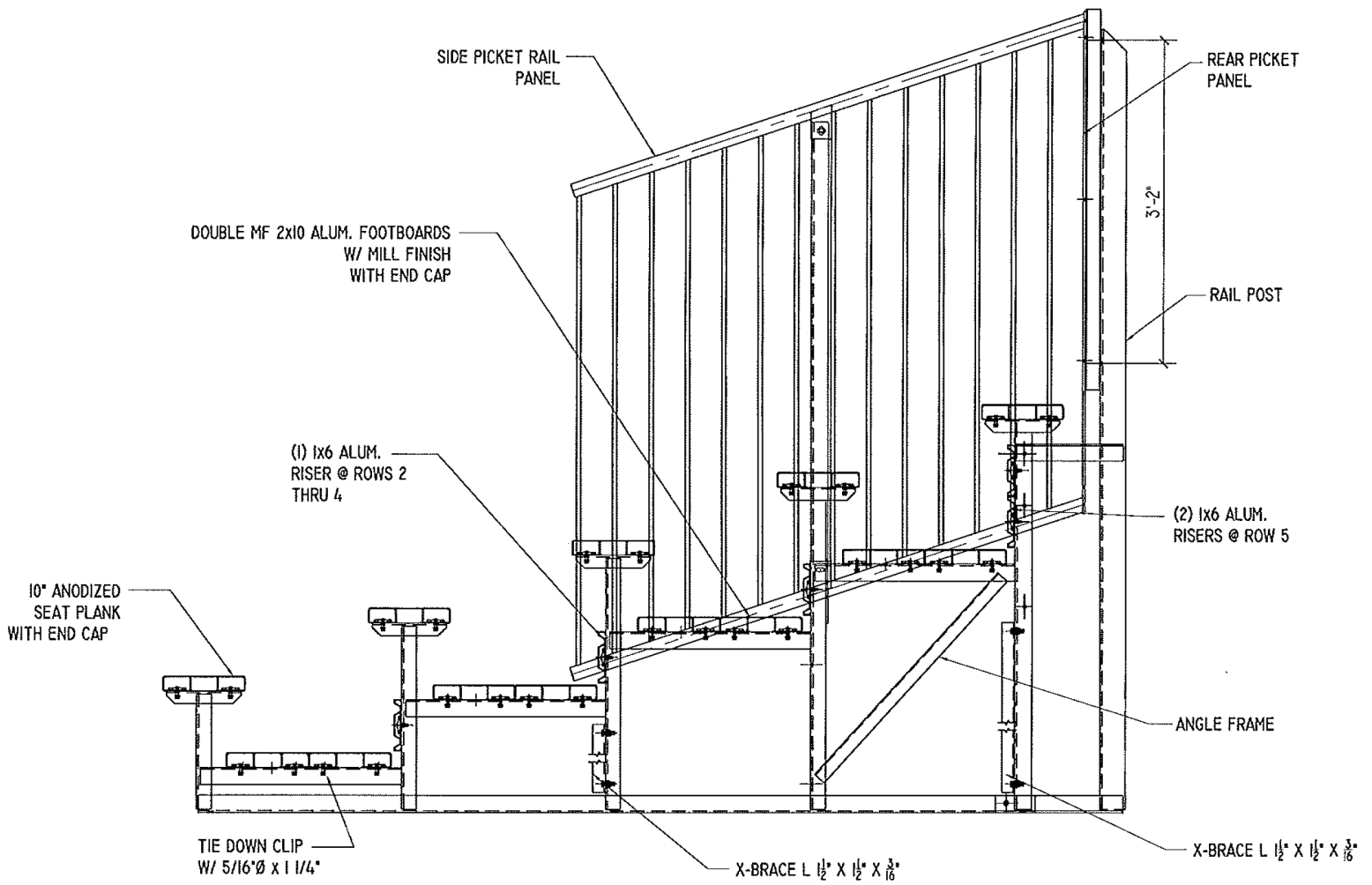


5 ROW 21' LENGTH COMPLIANT BLEACHER WITH PICKET GUARDRAIL

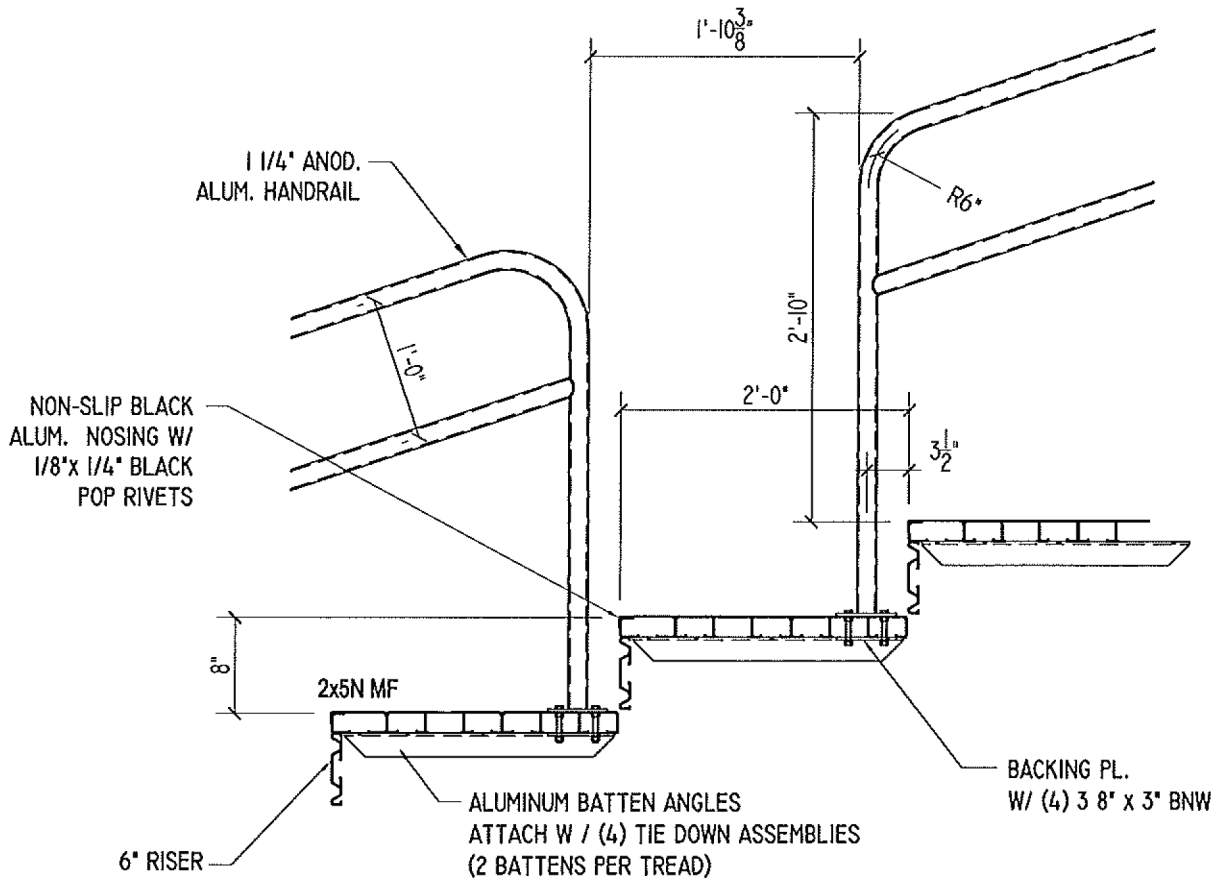


SEATING PLAN

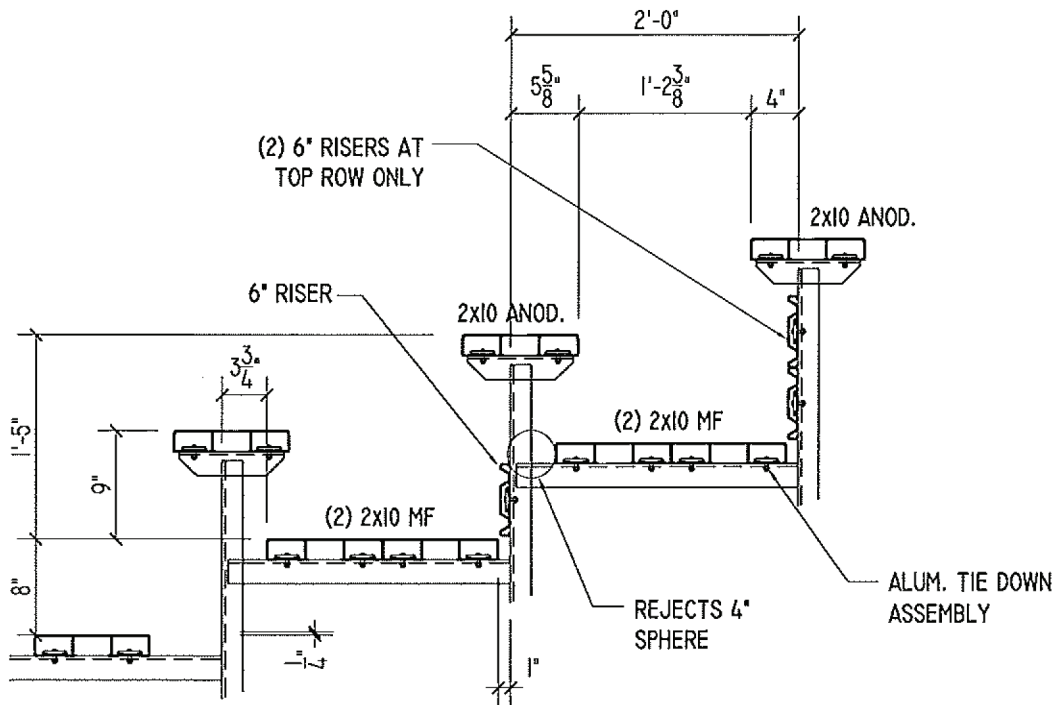
NET SEATS = 58



TYPICAL SECTION THRU BLEACHER

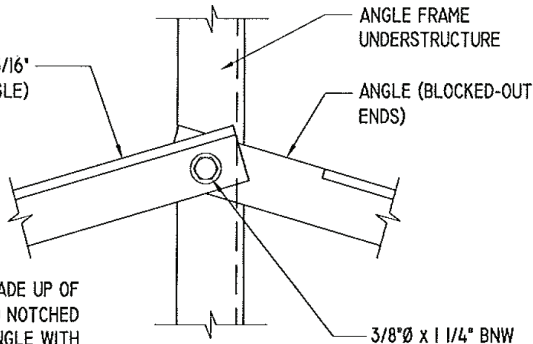


CONDITION AT AISLE



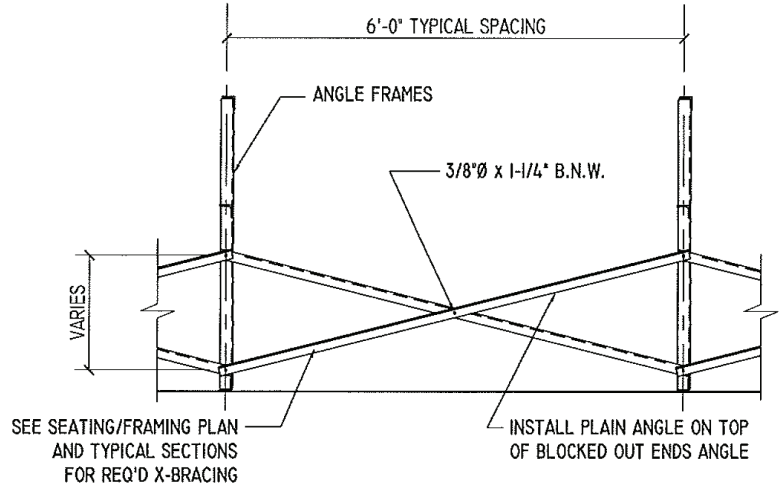
CONDITION AT SEATS

L 1 1/2"x 1 1/2"x 3/16"
X-BRACING (PLAIN ANGLE)



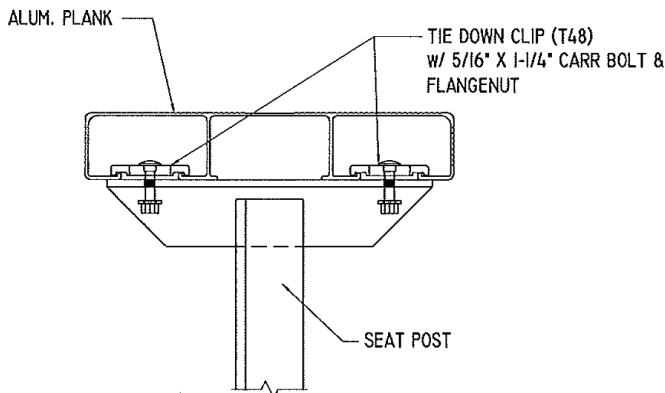
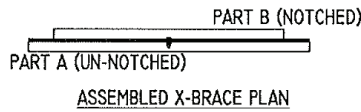
X-BRACE ASSEMBLY IS MADE UP OF (1) PLAIN ANGLE AND (1) NOTCHED ANGLE. INSTALL ANGLE WITH NOTCHED OUT ENDS NEAREST TO FRAME.

TYPICAL X-BRACE TO FRAME CONN.

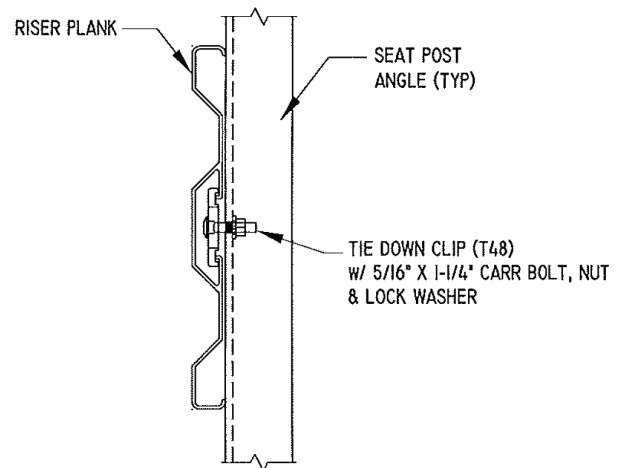


TYPICAL BRACING LAYOUT

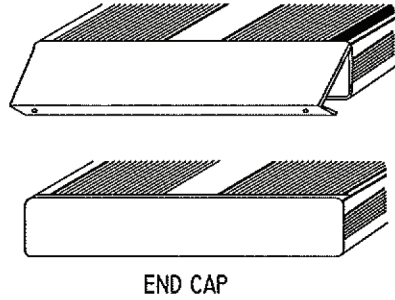
PRE-ASSEMBLE X-BRACE SETS. EACH SET CONSISTS OF A 'PART A (UN-NOTCHED)' AND A 'PART B (NOTCHED)'. PLACE THE PIECES TOGETHER AT THE FLAT SIDES AND CONNECT USING A 3/8" X 1-1/4" B.N.W.



SEAT PLANK INSTALLATION



TYPICAL RISER INSTALLATION



END CAP

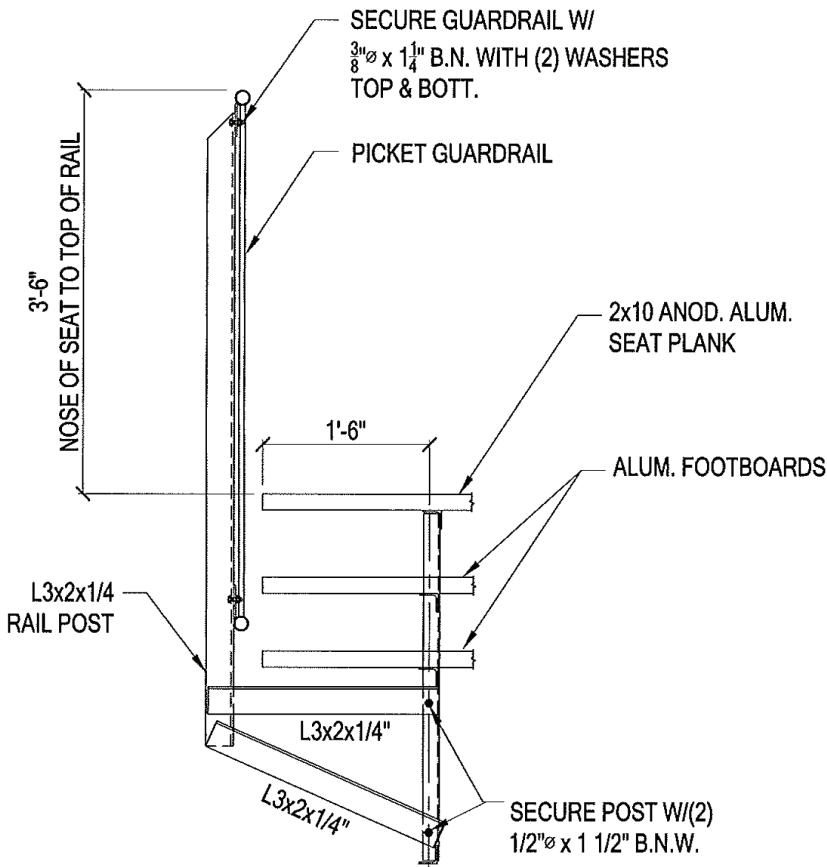
1. LOCATE THE CHANNEL END CAP AS SHOWN, WITH THE WIDER FLANGE ON BOTTOM.

2. TAP THE CHANNEL INTO PLACE WITH A RUBBER Mallet OR SOFT WOOD.

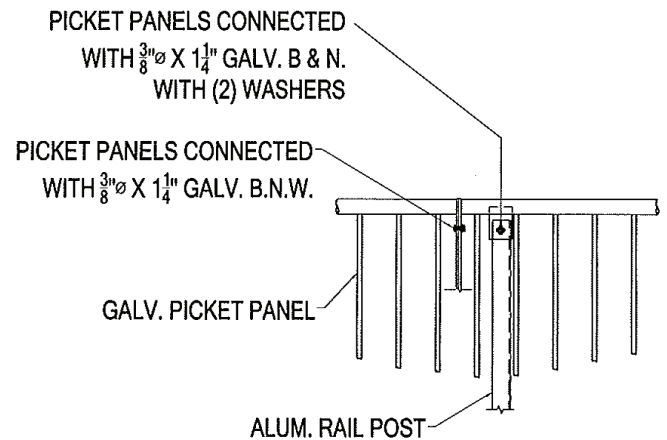
3. DRILL (2) No.8 x 3/4" TEK SCREWS THRU END CAP AND BOTTOM FLANGE OF PLANK

4. ENDCAPS WITH STICKERS ARE TO GO AT ENDS OF SEAT PLANKS, PLAIN ENDCAPS GO ON ALL OTHER BOARDS.

ENDCAP INSTALLATION DETAIL



RAIL POST CONNECTION DETAIL



PICKET TO PICKET & POST CONN.