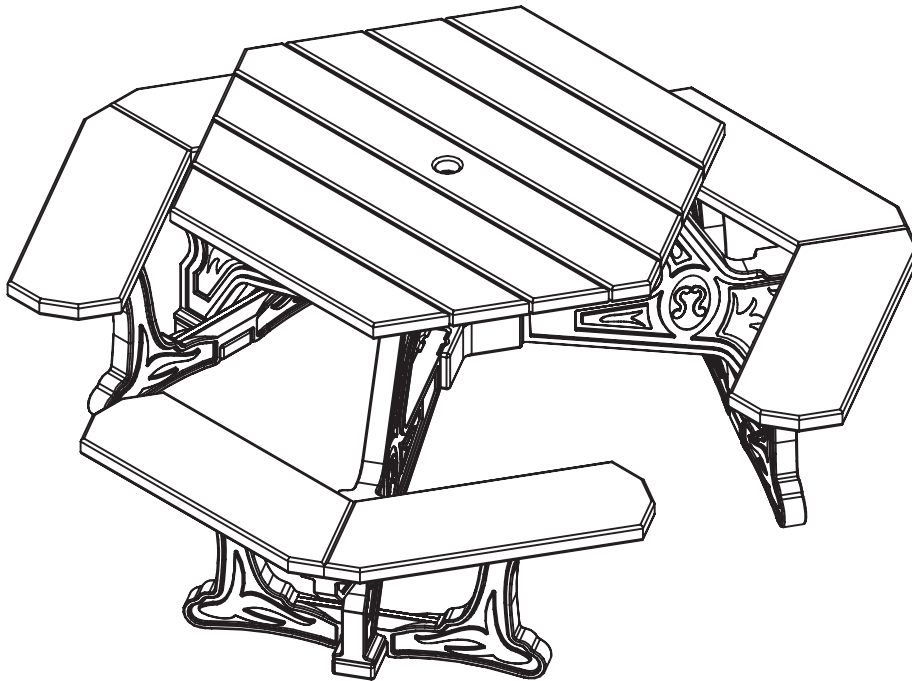


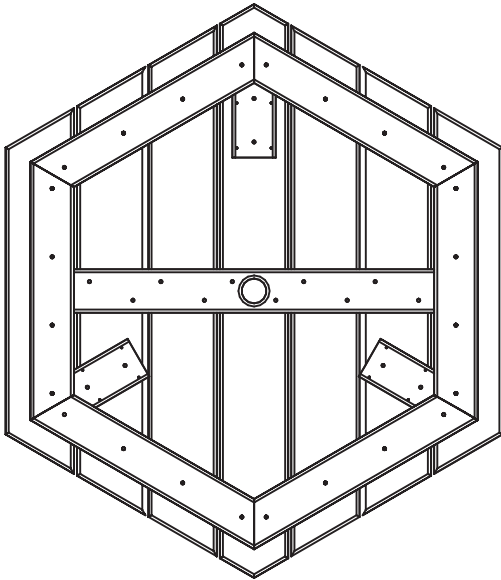
Model # DF6S-P

Instructions Sheet

**RECYCLED PLASTIC HEXAGONAL  
PLAZA PICNIC TABLE**

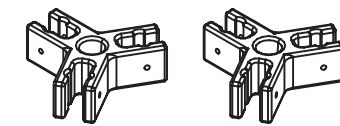


BEFORE ASSEMBLY, PLEASE MAKE SURE ALL COMPONENTS ARE INCLUDED.

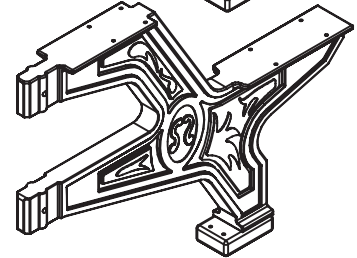
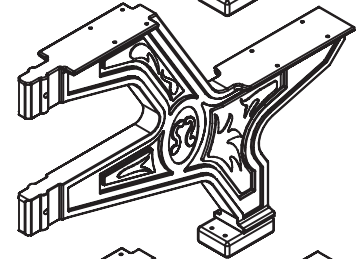
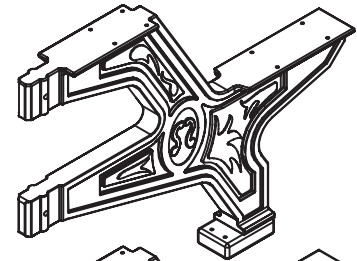


FP - FASTENER PACK  
(1) - ONE FASTENER PACK

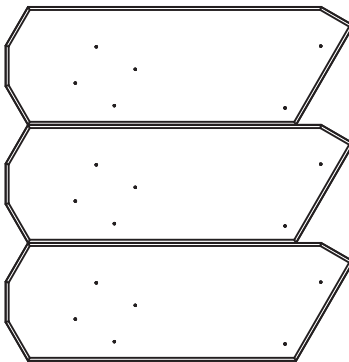
J - TABLE TOP  
(1) - ONE TABLE TOP



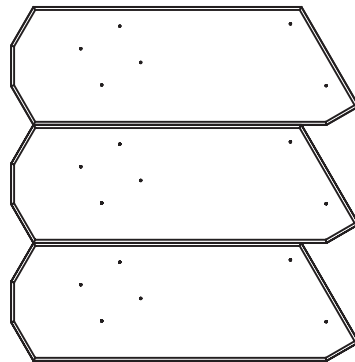
R - TABLE CENTER  
(2) - TWO TABLE CENTERS



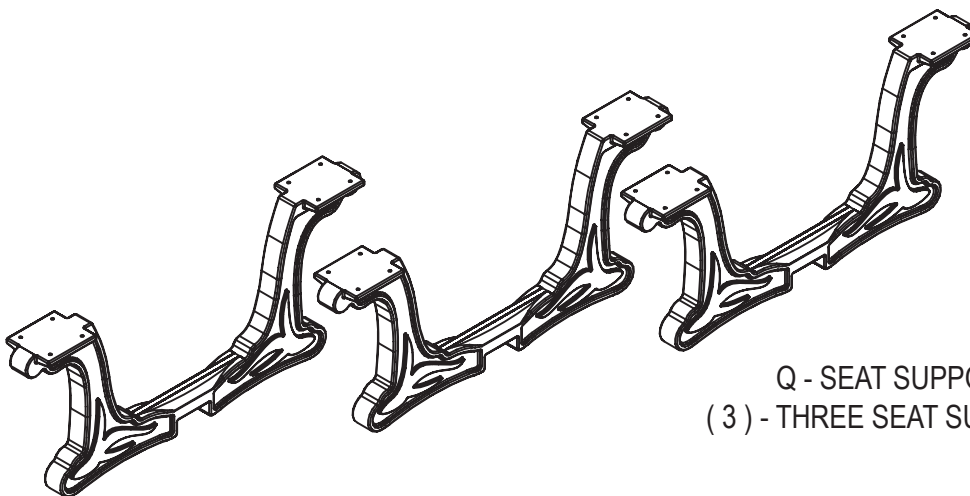
H - TABLE LEG  
(3) - THREE TABLE LEGS



N - LEFT SEAT  
(3) - THREE LEFT SEATS



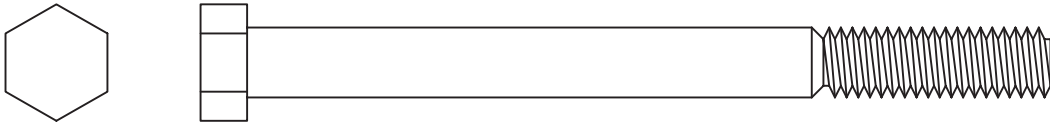
O - RIGHT SEAT  
(3) - THREE RIGHT SEATS



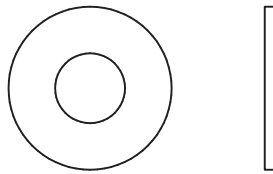
Q - SEAT SUPPORT  
(3) - THREE SEAT SUPPORTS

BEFORE ASSEMBLY, PLEASE MAKE SURE ALL FASTENERS ARE INCLUDED.

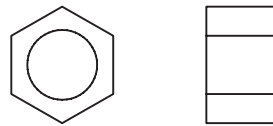
6 - 3/8" X 4-1/4" HEX HEAD BOLT



12 - 3/8" FLAT WASHER



6 - 3/8" NYLON LOCK NUT



6 - #12 X 3" FLAT HEAD PHILLIPS SCREW

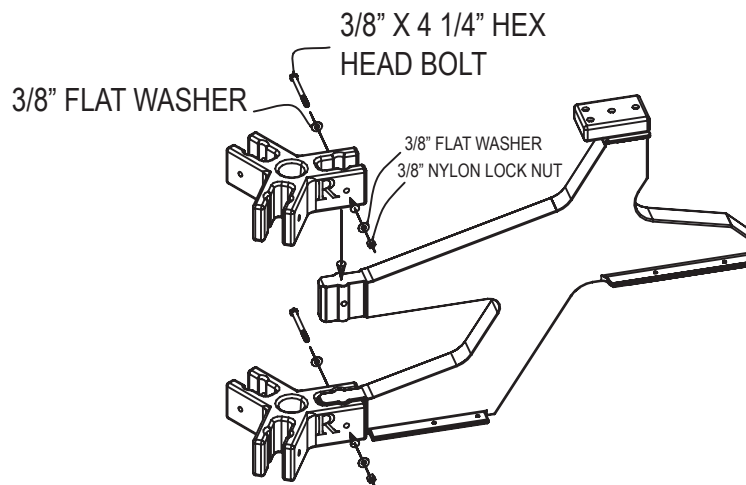


48 - #12 X 1-1/2" PAN HEAD PHILLIPS SCREW



ALSO NEED FOR THIS ASSEMBLY WILL BE THE FOLLOWING MATERIALS:

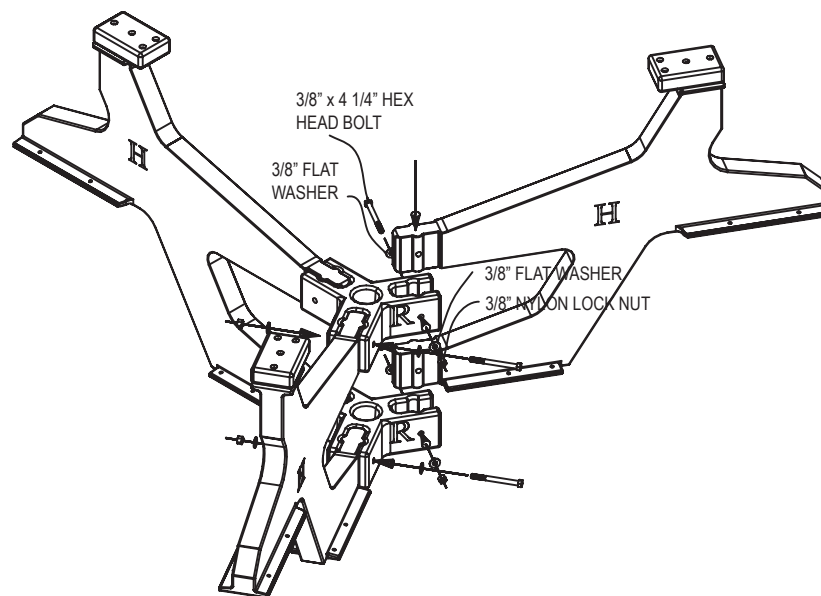
- 1 - #3 PHILLIPS DRIVE BIT
- 2 - 9/16" SOCKET WRENCH



**STEP #1:**

SLIDE ( 1 ) ONE TABLE CENTER ON TO EACH END OF THE TABKE LEG AS SHOWN ABOVE. USE ( 1 ) ONE 3/8" X 4 1/4" HEX HEAD BOLT AND ( 1 ) ONE 3/8" FLAT WASHER ALONG WITH ( 1 ) ONE 3/8" FLAT WASHER AND ( 1 ) ONE 3/8" NYLON LOCK NUT PER HOE TO SECURE.

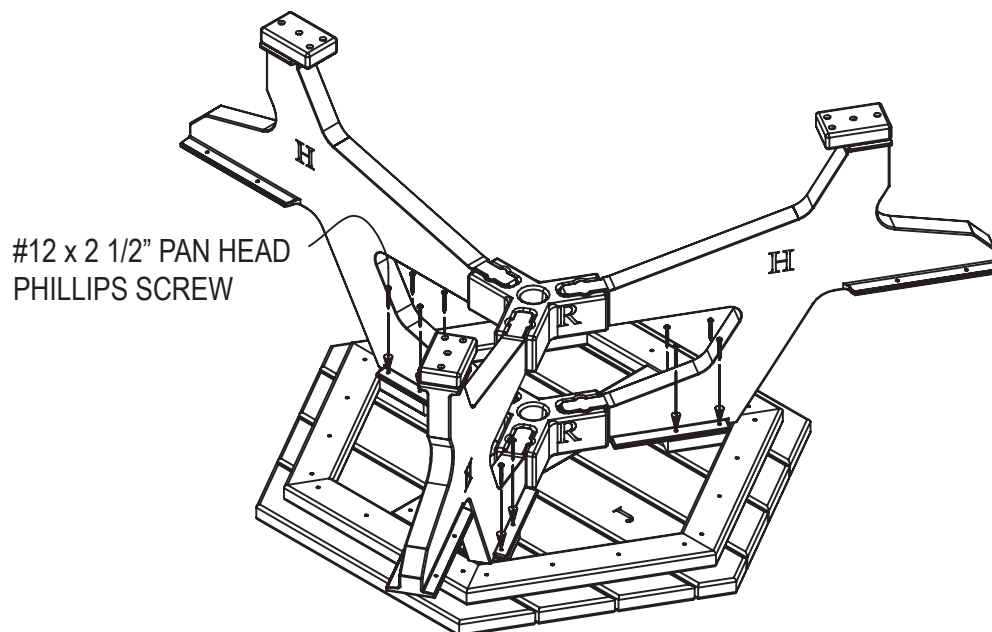
DO NOT TIGHTEN BOLTS COMPLETELY. THIS WILL BE DONE IN A LATER STEP.



**STEP #2:**

SLIDE THE REMAINING TABLE LEGS INTO THE TABLE CENTERS. USE ( 1 ) ONE 3/8" X 4 1/4" HEX HEAD BOLT AND ( 1 ) ONE 3/8" FLAT WASHER ALONG WITH ( 1 ) ONE 3/8" FLAT WASHER AND ( 1 ) ONE 3/8" NYLON LOCK NUT PER HOLE TO SECURE.

DO NOT TIGHTEN BOLTS COMPLETELY. THIS WILL BE DONE IN A LATER STEP.

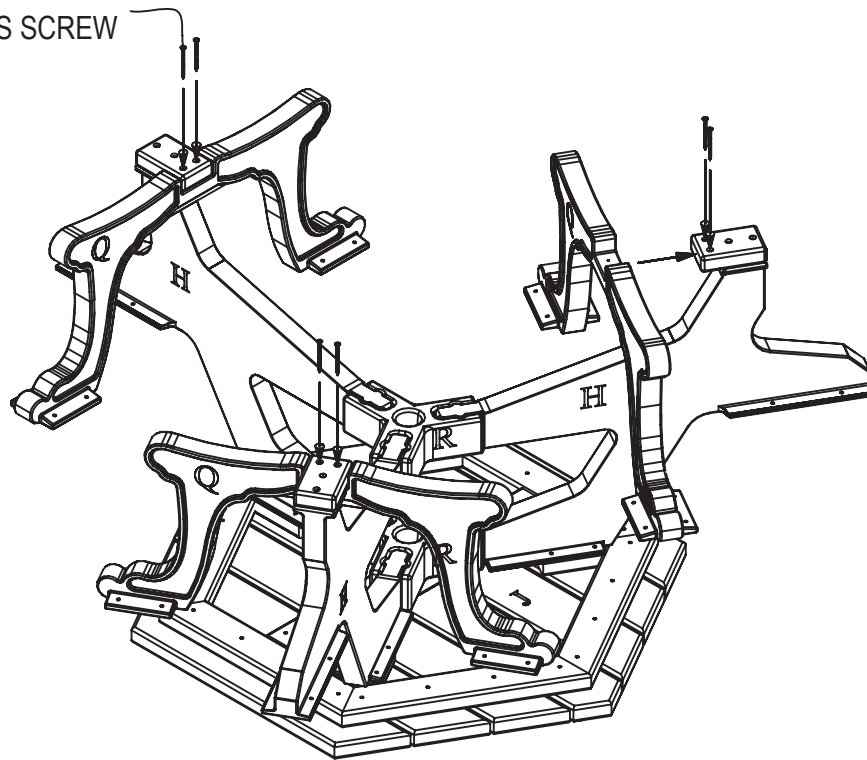


**STEP #3:**

WHILE THE TABLE TOP IS UPSIDE DOWN, PLACE THE LEG ASSEMBLY ONTO THE TABLE TOP AS SHOWN ABOVE. ALIGN THE PRE-DRILLED HOLES IN THE TABLE LEGS WITH THE PILOT HOLES IN THE TABLE TOP. USE ( 1 ) ONE #12 X 2 1/2" PAN HEAD SCREW PER HOLE TO SECURE.

BE SURE TO TIGHTEN ALL SCREWS AFTER COMPLETING THIS STEP.

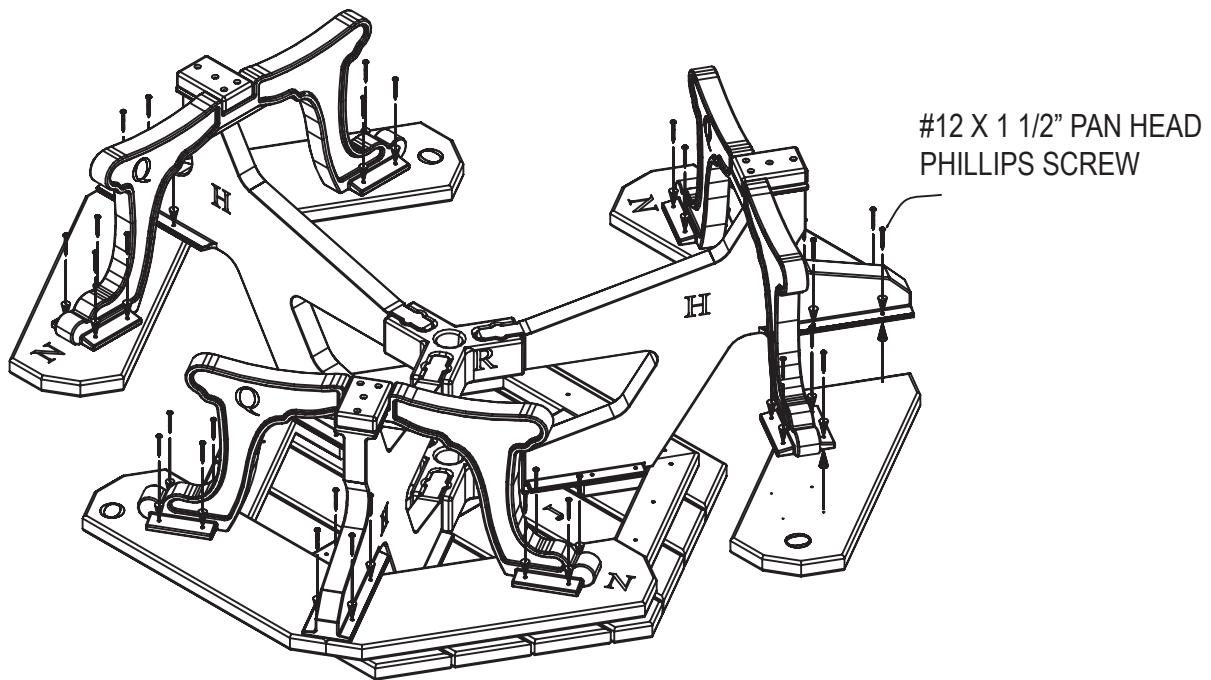
#12 x 3" FLAT HEAD  
PHILLIPS SCREW



**STEP #4:**

WHILE THE TABLE IS UPSIDE DOWN, ALIGN THE PRE-DRILLED HOLES IN THE TABLE LEG TO THE PILOT HOLES IN THE SEAT SUPPORT AS SHOWN ABOVE. USE ( 1 ) ONE #12 X 3" FLAT HEAD SCREW PER HOLE TO SECURE.

DO NOT TIGHTEN SCREWS COMPLETELY. THIS WILL BE DONE IN A LATER STEP.

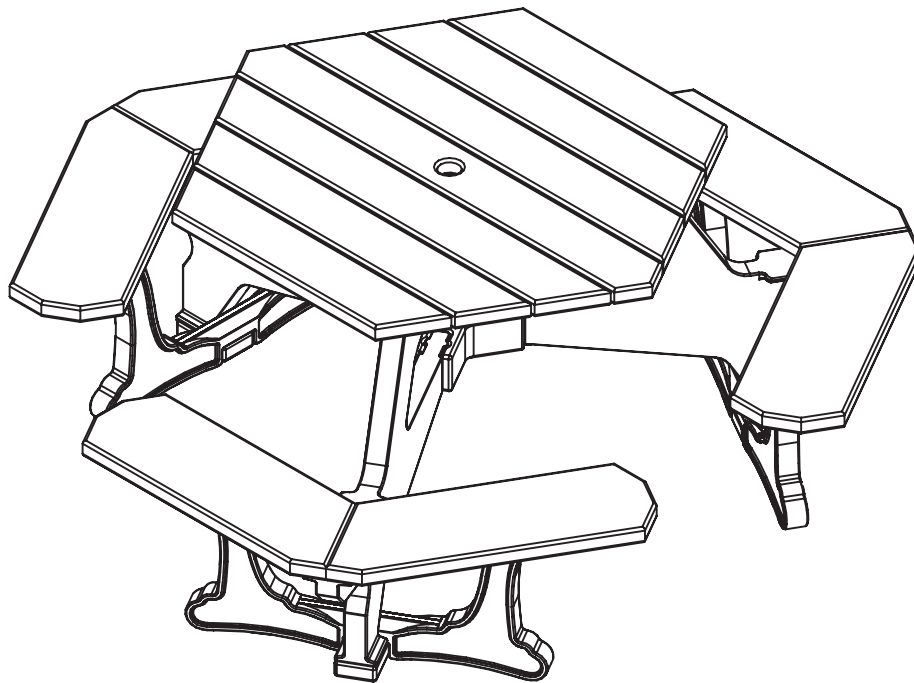


**STEP #5:**

WHILE THE TABLE IS UPSIDE DOWN, ALIGN THE PRE-DRILLED HOLES IN THE SEAT TO THE PILOT HOLES IN THE SEAT SUPPORT AND THE TABLE LEG AS SHOWN ABOVE. USE ( 1 ) ONE #12 X 1 1/2" PAN HEAD SCREW PER HOLE TO SECURE.

BE SURE TO TIGHTEN ALL LOOSE SCREWS AFTER COMPLETING THIS STEP.





STEP #6:  
WITH ASSISTANCE TURN THE TABLE OVER ONTO ITS LEGS, PLEASE USE CAUTION FOR THE  
TABLE WEIGHS APPROXIMATELY 240 POUNDS.