



Principal Plant and General Offices
627 Amersale Drive
Naperville, IL 60563

Toll Free: 1-800-323-5664
Phone: 1-630-897-8489
Fax: 1-630-897-0573
Web Site: www.belson.com

PARK MASTER

Thank you for buying a BELSON OUTDOORS quality product.

Please read and follow assembly instructions. Refer to appropriate page depending on the table you wish to put together. If the lumber is not provided by Belson, follow drilling instructions on page (2).

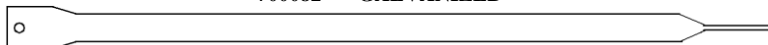
INDEX

- 1) FRAME KIT CONTENTS
- 2) LUMBER CONTENTS AND WOOD DRILLING INST.
- 3) RECYCLED PLASTIC TABLE ASSEMBLY INST.
- 4) RECYCLED PLASTIC TABLE (CONTINUED)

PMB-WF or PMG-WF FRAME KIT CONTENTS:

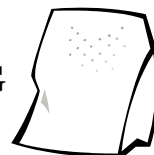
(2) SUPPORT BRACE

700083 BLACK
700082 GALVANIZED



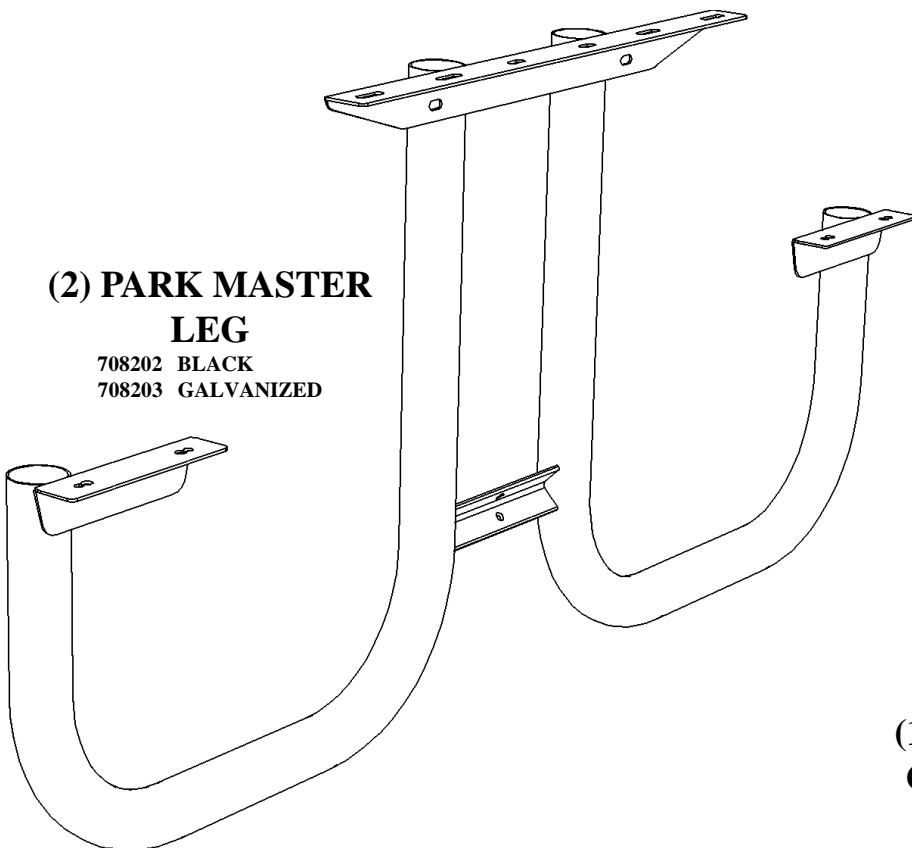
(1) HARDWARE BAG

702301



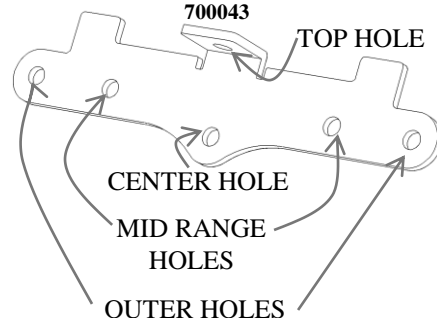
(2) PARK MASTER LEG

708202 BLACK
708203 GALVANIZED



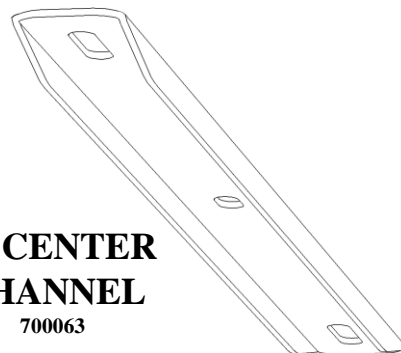
(1) CENTER BRACKET

700043



(1) CENTER CHANNEL

700063



BELSON PRE CUT & PRE DRILLED LUMBER KIT (OPTIONAL)

LUMBER KIT CONTENTS:

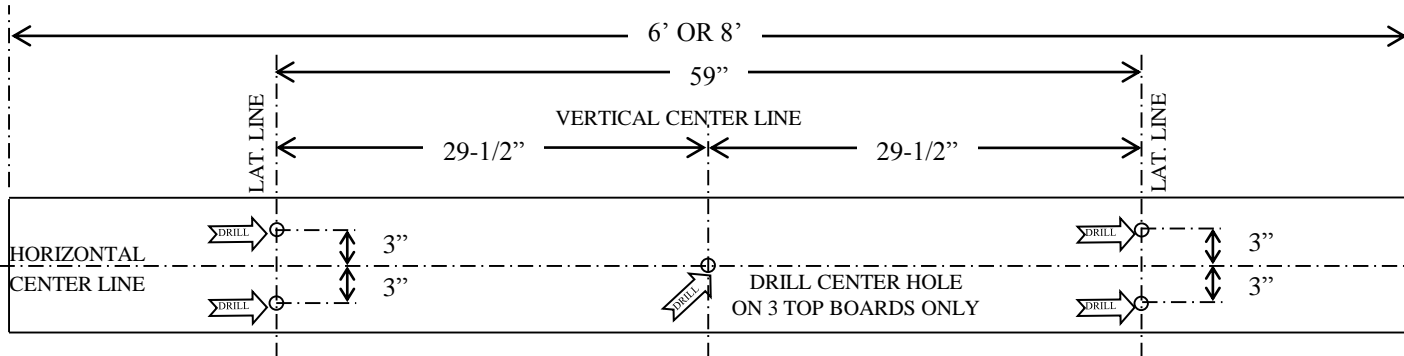
CENTER (1)	○ ○ ○	○	○ ○	5 HOLES
SIDE (2)	○ ○	○	○ ○	5 HOLES
SEAT (2)	○ ○		○ ○	4 HOLES

THE SIZE OF THE BOARDS DEPENDS ON TABLE/KIT MODEL, EITHER 6' OR 8' SEE INSTRUCTIONS FOR ASSEMBLY.

WOOD PICNIC TABLE DRILL PATTERN

TOOLS NEEDED: drill, 3/8" drill bit, pencil and tape measure or ruler.

RECOMMENDED LUMBER: 2" x 10" Nominal (1-1/2" thick by 9-1/4" wide).

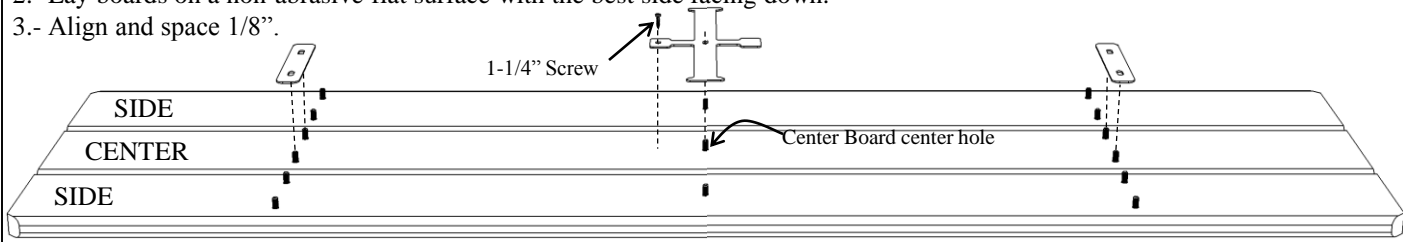


- 1.-Make sure all 5 boards are of consistent length, roughly 6' or 8' (two 6' and three 8' for ADA models).
- 2.-Lay all 5 boards on a flat surface that will not damage the wood with the best side down.
- 3.-Draw centered *Vertical* and *Horizontal Lines*, then two *Lateral Lines* 29-1/2" from *Vertical Center Line* on all boards (this will be your reference for hole locations).
- 4.-Drill 3/8" diameter holes in boards per drill pattern and notes indicated above.
- 5.-If desired, cut miters as per top of page lumber kit details and paint or seal before assembly.

RECYCLED PLASTIC PARK MASTER ASSEMBLY INSTRUCTIONS

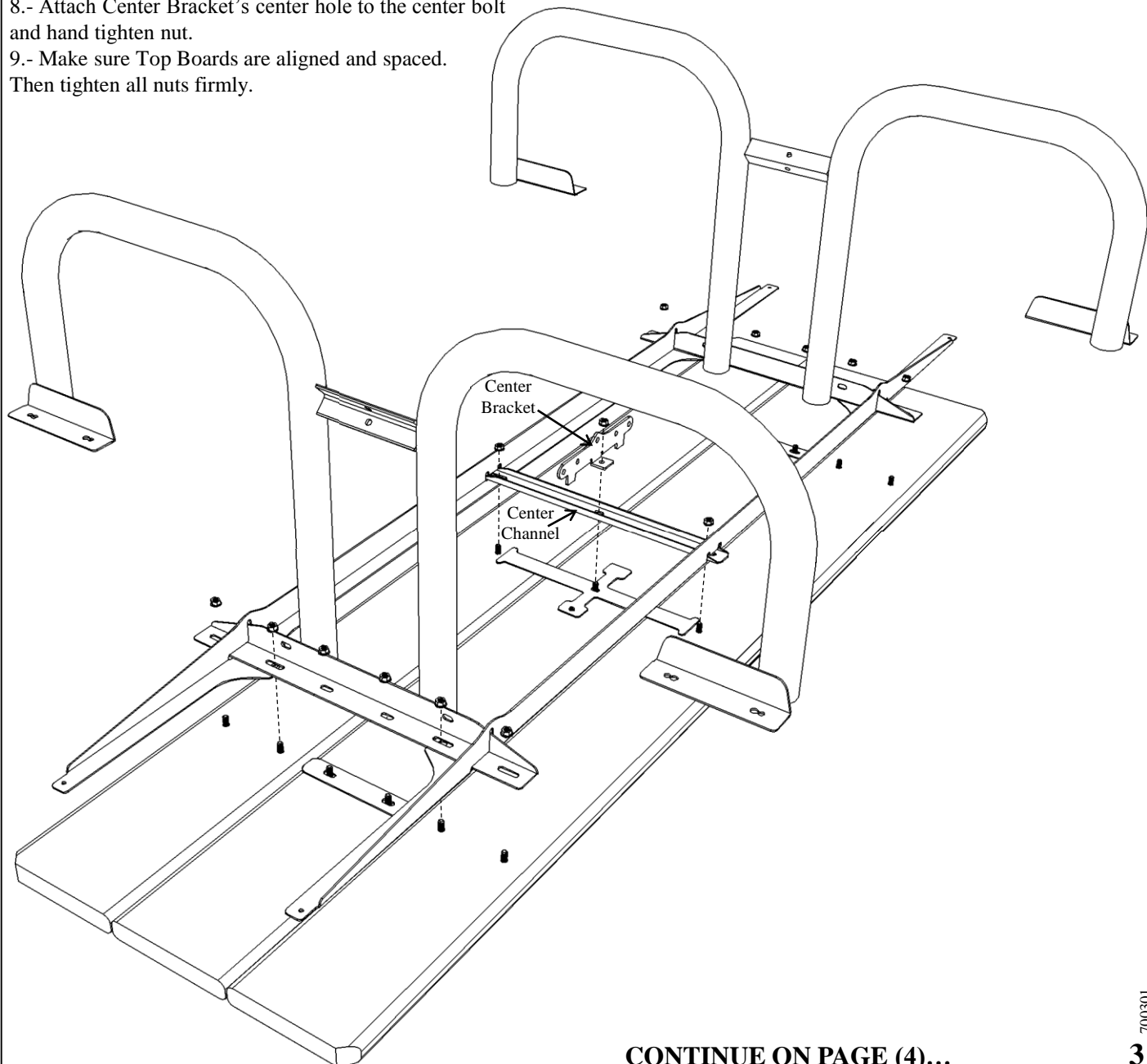
TOOLS REQUIRED: 9/16" wrench, hammer, powered screw driver or drill with Phillips tip No. 2.

- 1.- Insert 2-1/4" carriage bolts through 3 Top Boards best face. Use 2-3/4" carriage bolt for Center Board's center hole (carriage bolts can be found in the Super Structure hardware package).
- 2.- Lay boards on a non-abrasive flat surface with the best side facing down.
- 3.- Align and space 1/8".



- 4.- Place 2 Side Spacers and attach Center Spacer using 1-1/4" screw.

- 5.- Align Leg/Top "L" Bracket's second hole from outside with Rail hole sliding into place as shown.
- 6.- Slide Center Channel into Rail's middle slots. Align outside holes with Rail's middle holes.
- 7.- Place partial assembly from step 5 and 6 on top of boards aligning holes and carriage bolts as shown. Hand tighten nuts.
- 8.- Attach Center Bracket's center hole to the center bolt and hand tighten nut.
- 9.- Make sure Top Boards are aligned and spaced. Then tighten all nuts firmly.

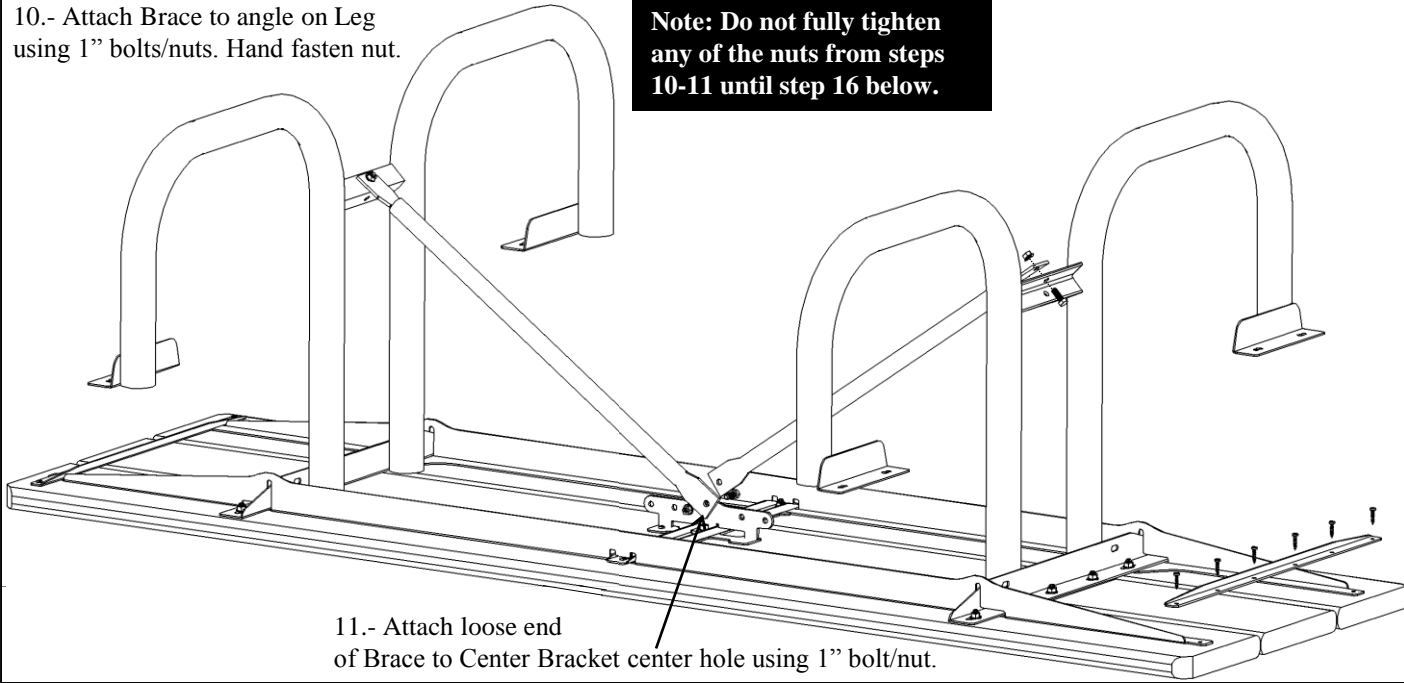


CONTINUE ON PAGE (4)...

RECYCLED PLASTIC PARK MASTER ASSEMBLY INSTRUCTIONS (CONTINUED)

10.- Attach Brace to angle on Leg using 1" bolts/nuts. Hand fasten nut.

Note: Do not fully tighten any of the nuts from steps 10-11 until step 16 below.



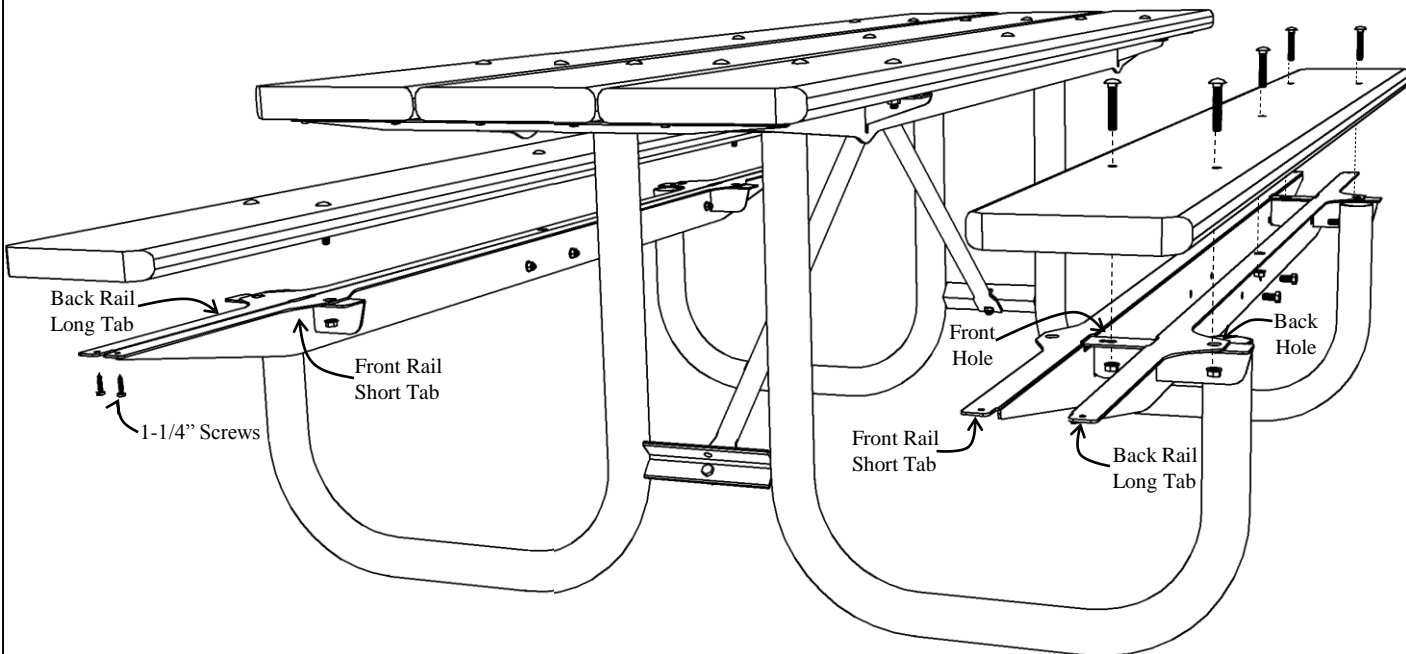
11.- Attach loose end of Brace to Center Bracket center hole using 1" bolt/nut.

12.- Flip the partial table assembly into an upright position.

13.- Slide Back Rail onto Seat Bracket aligning holes with Seat Brackets back holes. Then slide Front Rail onto Seat Bracket aligning holes with Seat Bracket front holes. Angled edges should butt up against each other as shown.

14.- Insert 2-1/4" carriage bolts through Seat Boards (boards with 4 miters) best face. Then attach Seat Boards to frame as shown.

15.- Bolt Back and Front Rails together using 3/4" bolts / nuts (4 places). Tighten 1-1/4" screws in place as shown.



16.- Tighten all nuts firmly, including assembled parts in steps 10 and 11.

17.- The Picnic Table is finished.